

Lab Equipment

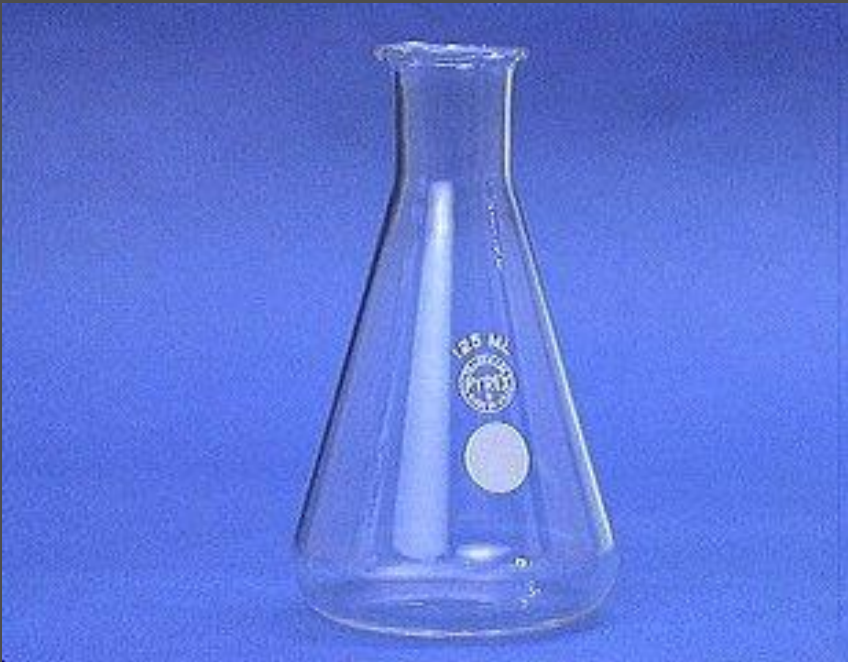


Beaker

Beakers hold solids or liquids that will not release gases when reacted or are unlikely to splatter if stirred or heated.



Erlenmeyer Flask



Erlenmeyer flasks hold solids or liquids that may release gases during a reaction or that are likely to splatter if stirred or heated.

Graduated Cylinder

A graduated cylinder is used to measure volumes of liquids.



Test Tubes

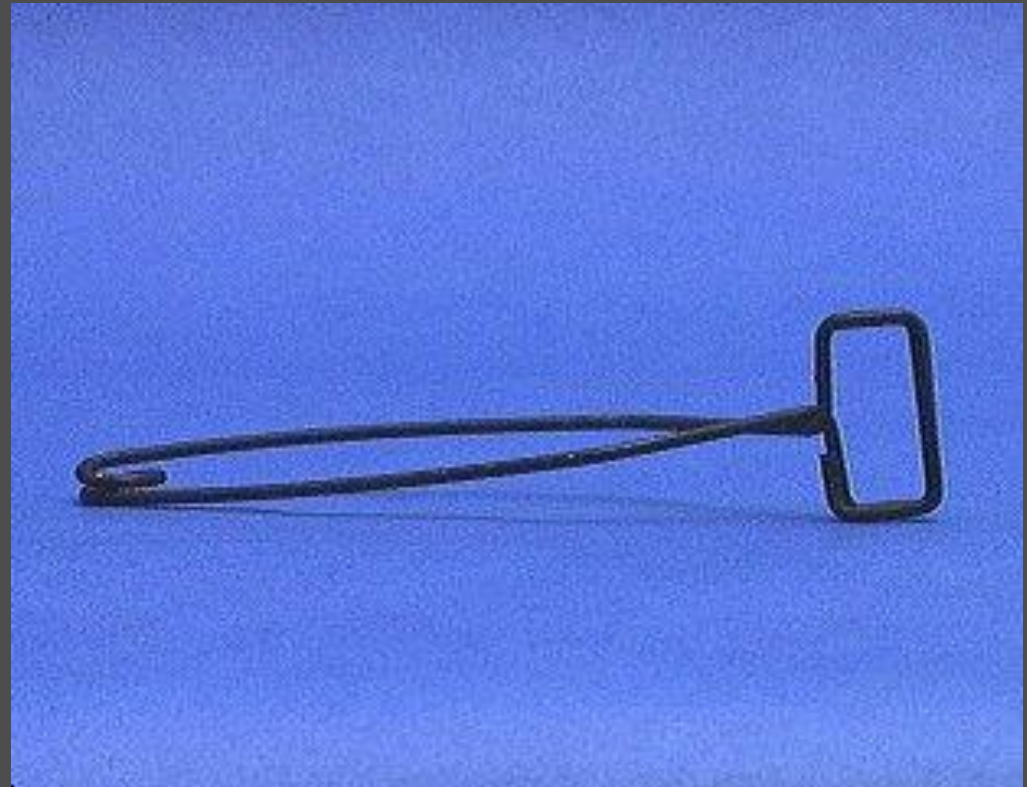
Ignition
tube



Used for reacting small quantities
and for heating reactants

Test Tube Holder

A test tube holder is useful for holding a test tube which is too hot to handle.



Test Tube Brushes

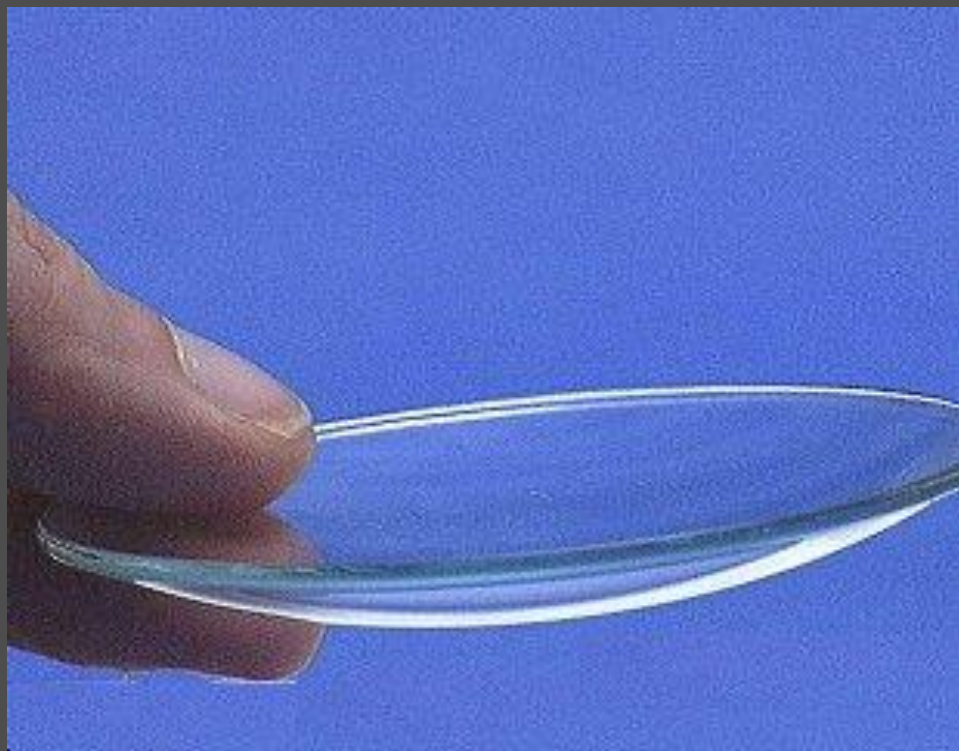
Test tube brushes are used to clean test tubes and graduated cylinders.

Forcing a large brush into a small test tube will often break the tube.

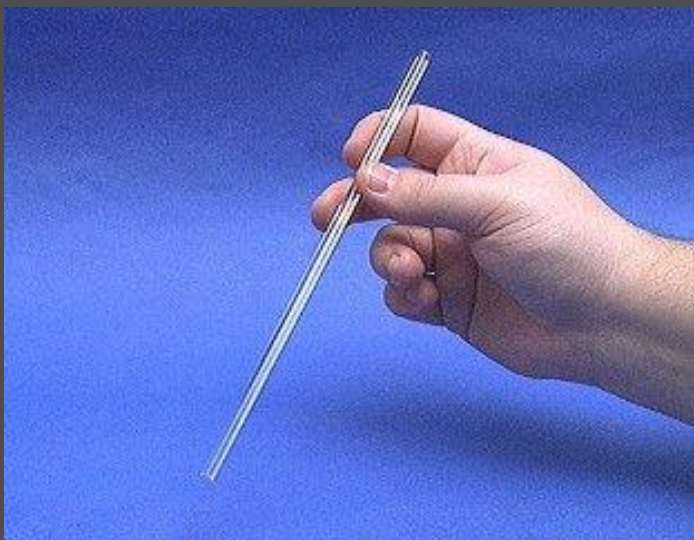


Watch Glass

A watch glass is used to hold a small amount of solid, such as the product of a reaction.



Glass Stir Rod



A glass rod is used to manually stir solutions. It can also be used to transfer a single drop of a solution.



The attached rubber-policeman is for transferring solids. Don't stir with this end!

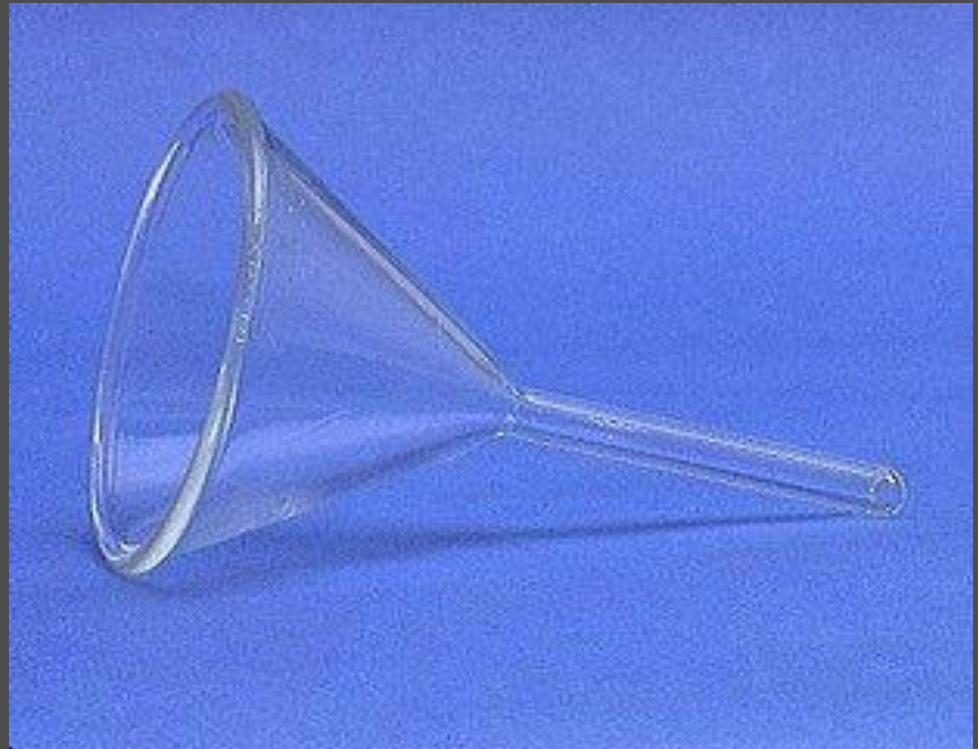
Forceps



Forceps (or tweezers) are used to pick up small objects.

Funnel

A funnel is used to aid in the transfer of liquid from one vessel to another.



Wash Bottle



A wash bottle has a spout that delivers a wash solution to a specific area. **Distilled water** is the only liquid that should be used in a wash bottle.

Weighing Boat

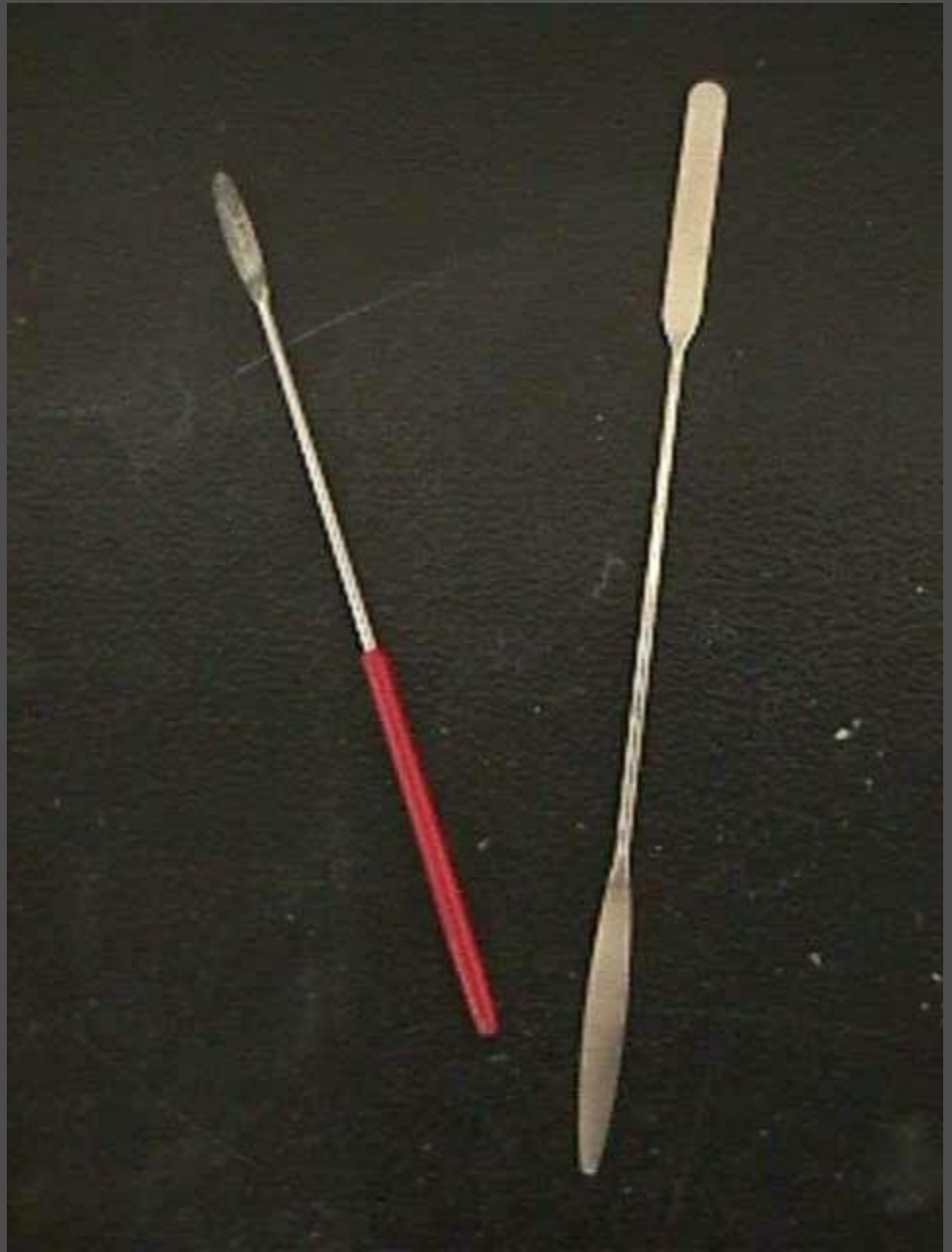
Weighing boats are used to weigh solids that will be transferred to another vessel.



Spatulas

Spatulas are used to dispense solid chemicals from their containers.

Chemicals should never be transferred with your bare hands.

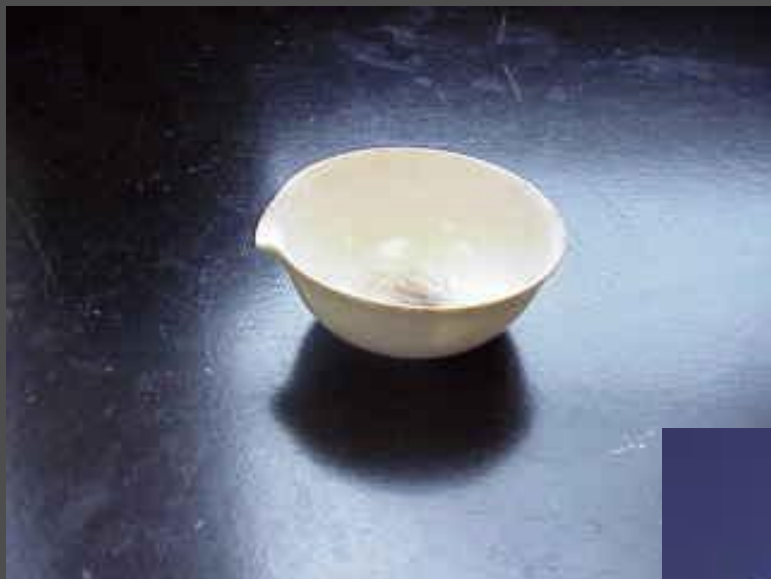


Beaker Tongs



Beaker tongs are used to move beakers containing hot liquids

Evaporating Dish



The evaporating dish is used for the heating of stable solid compounds and elements.



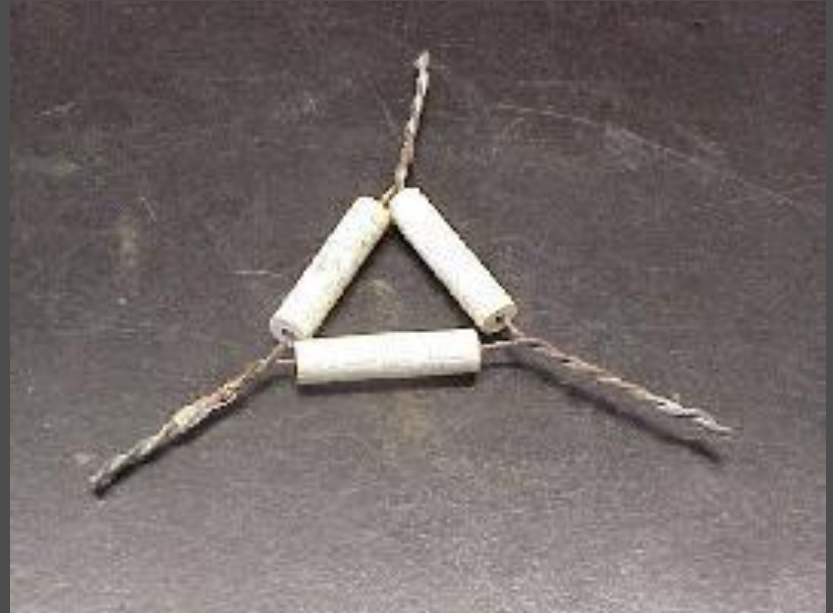
Crucible



Crucibles are used for heating certain solids, particularly metals, to very high temperatures.

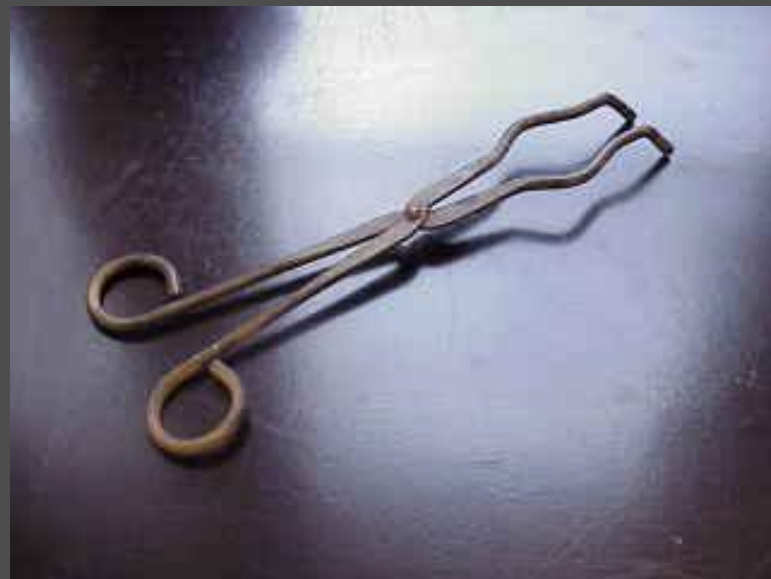
Clay Triangle

The clay triangle is used as a support for porcelain crucibles when being heated over a Bunsen burner.



Crucible Tongs

For handling hot crucibles;
also used to pick up other
hot objects. **NOT** to be
used for picking up
beakers!



Ringstands and their Components

Ringstands are a safe and convenient way to perform reactions that require heating using a Bunsen burner.



Ringstands and their Components

Iron Rings

Iron rings connect to a ringstand and provide a stable, elevated platform for the reaction.



Ringstands and their Components

Utility Clamps

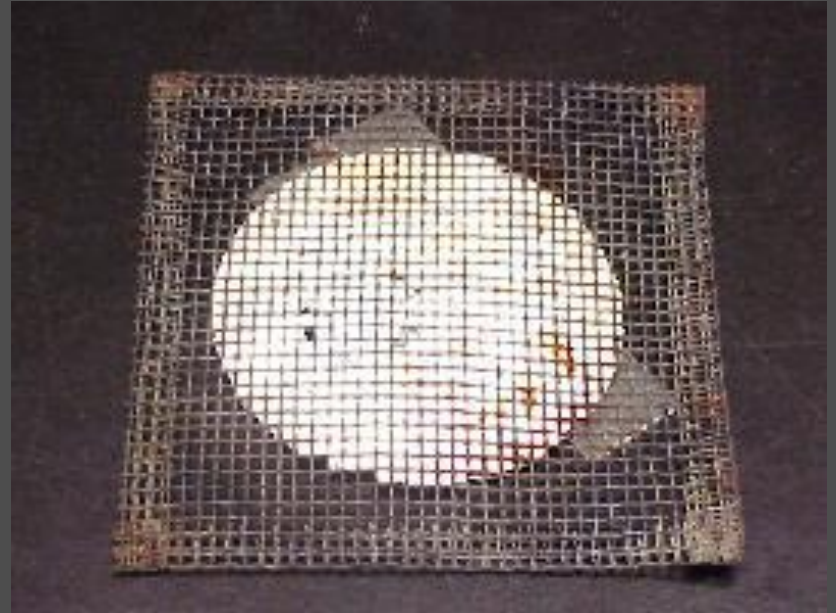
Utility clamps are used to secure test tubes, distillation columns, and burets to the ringstand.



Ringstands and their Components

Wire Gauze

Wire gauze sits on the iron ring to provide a place to stand a beaker.



Strikers

Strikers are used to light Bunsen burners.

The flints on strikers are expensive. Do not operate the striker repeatedly just to see the sparks!

