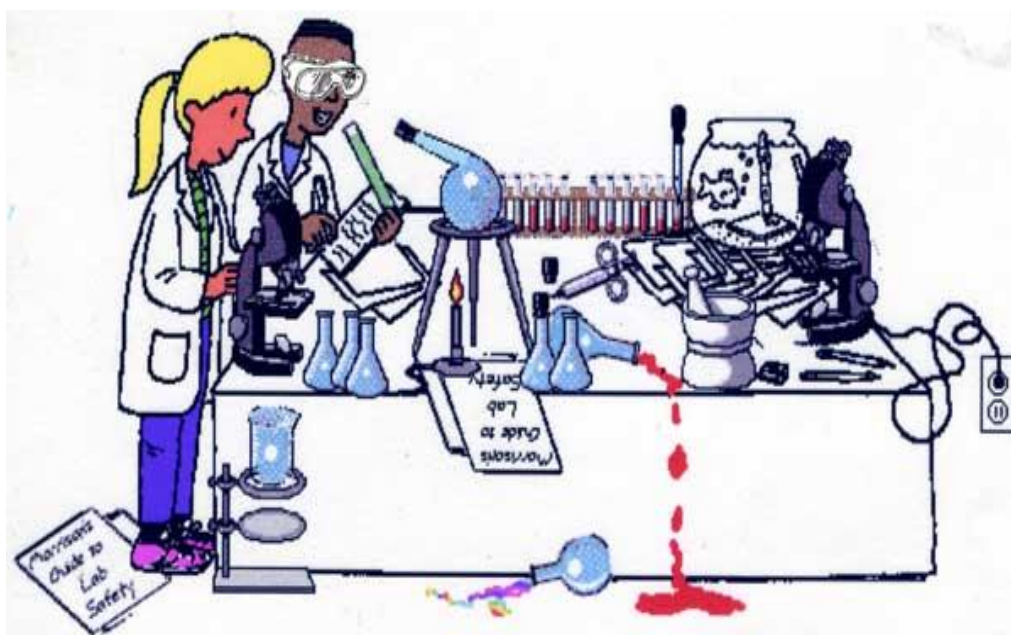


# SAFETY IN THE SCIENCE LABORATORY



FOHI  
Chemistry

**MOST**  
**IMPORTANT:**  
Conduct yourself in  
a **responsible**  
manner;  
**NO HORSEPLAY!**



Read instructions before starting experiments.  
Follow all instructions carefully  
**verbal & written!**



**Never work alone!!**

Don't touch anything until  
instructed to do so.





# Do not eat food, drink, or chew gum in the lab



Perform only those experiments  
authorized by the teacher!

Never Perform Unauthorized Experiments!



Keep work areas clean and tidy.  
Keep aisles clear.





**Only lab instructions**  
are allowed at lab bench.

No backpacks, purses, notebooks, etc...





# Know the locations and operating procedures of all safety equipment....

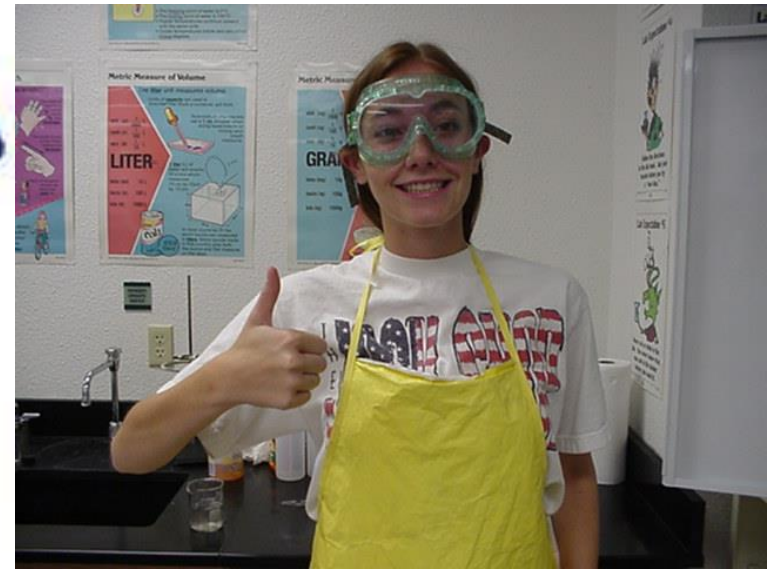
- ✓ Eyewash
- ✓ Fire blankets (2)
- ✓ Fire Extinguisher
- ✓ Safety Shower
- ✓ First Aid Kit
- ✓ Exits (2)
- ✓ Fire Alarm



Goggles and aprons must be worn when using **heat, chemicals,** and **glassware.**



**Wrong!**



**Correct**

If a chemical splashes on your skin:  
immediately **flush** with running  
water and **notify** instructor



- **Dispose** of all chemical waste according to instructions.
- **Clean** equipment and work area after use.
- **Return** all materials to proper location.



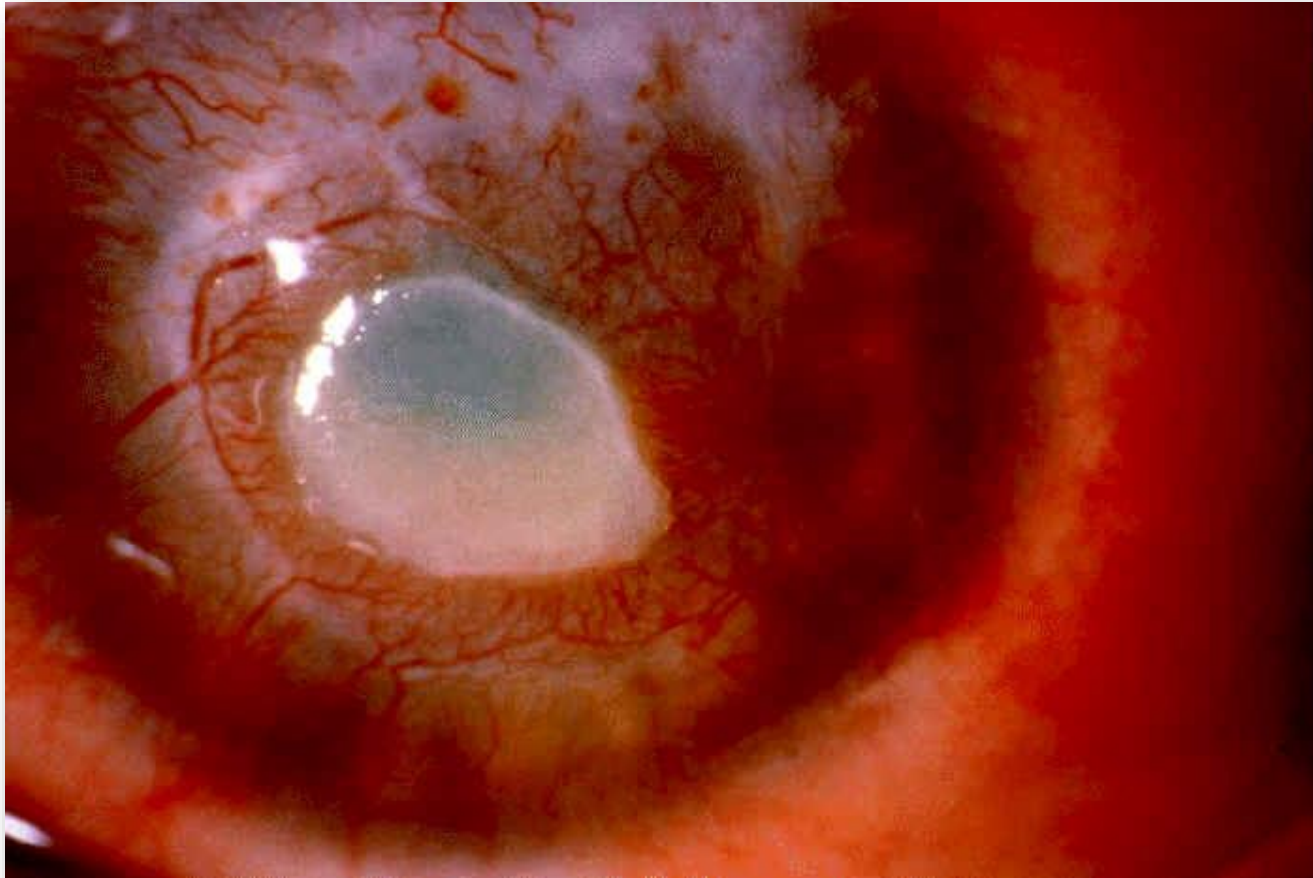


Keep hands away from face, eyes and mouth while using chemicals.



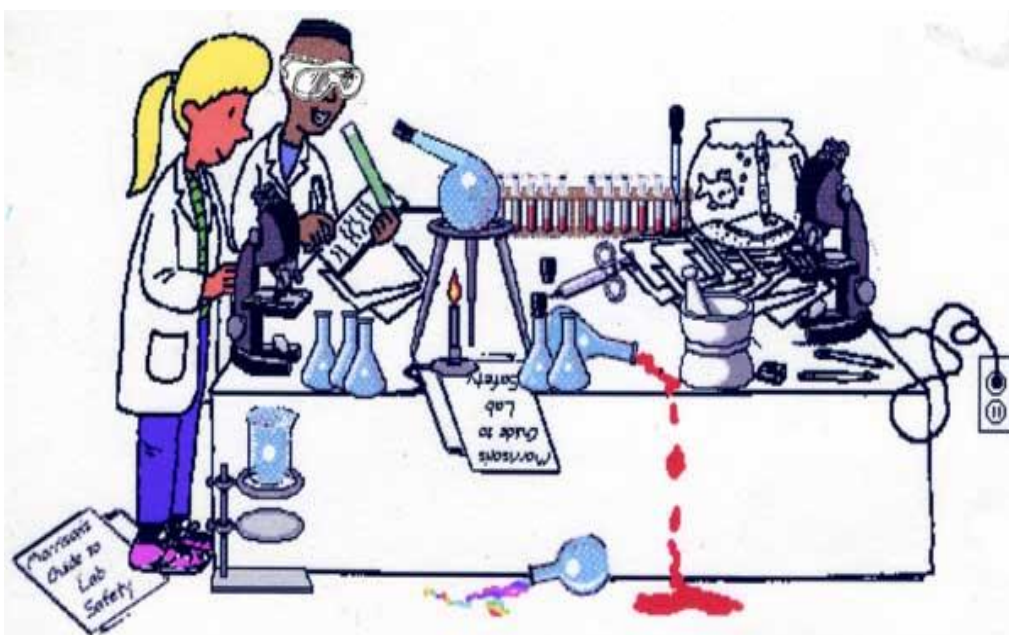
Wash hands thoroughly before leaving lab.

# Chemical Burn of the Eye



A chemical burn of the eye can be prevented by  
**WEARING GOGGLES.**

# SAFETY IN THE SCIENCE LABORATORY Pt.2



FOHI  
Chemistry

# Dress properly during a lab



- **Tie long hair back**
- **No dangling jewelry**
- **No loose, baggy clothing**



**No sandals.**  
**Shoes must completely cover foot.**



**Report** any accident or  
injury to the teacher  
**immediately**



When checking a chemical for odors, gently **waft** vapors towards nose.



NO



YES

- Check labels on chemical bottles at least **TWICE!!**
- Take only as much chemical as you need;
- **Never return unused chemicals** to their original containers;





# Clean up all spills immediately.



1. Never return spilled or unused material to the reagent bottle.
2. **Solids** should be **swept up** and placed in the waste disposal container
3. Small **liquid** spills should be **diluted with water** and **mopped up** with a cloth towel.
4. Large spills must be handled by the instructor.

Never use  
chemicals from  
an **unlabeled**  
container.





Never remove  
chemicals or  
equipment from  
the lab.

When diluting acids always  
add **acid** to **water**.

Pee into water → add acid to water.



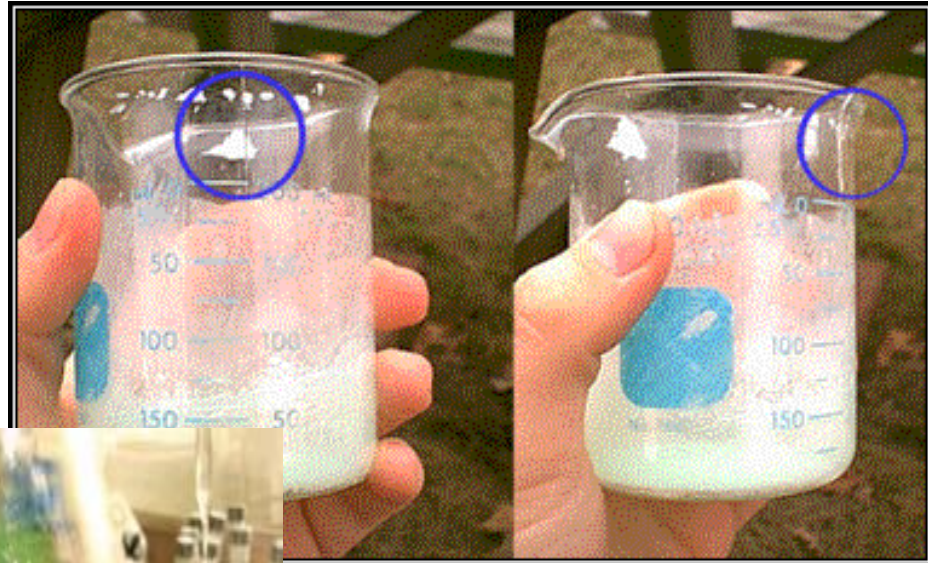


# Never handle broken glass with your bare hands.

- Use a **dust pan and brush**
- Place broken glass in glass disposal container.



- Never use chipped, cracked or dirty glassware;
- Never leave a lit burner unattended;



# Heating Test Tubes

- NEVER point a test tube at yourself or another person!
- ALWAYS direct the mouth away from people!
- Point the opening towards the **nearest wall!**



Wrong!



Correct!



- Never look into a container that is being heated;
- Be careful – hot glass **doesn't look hot!**

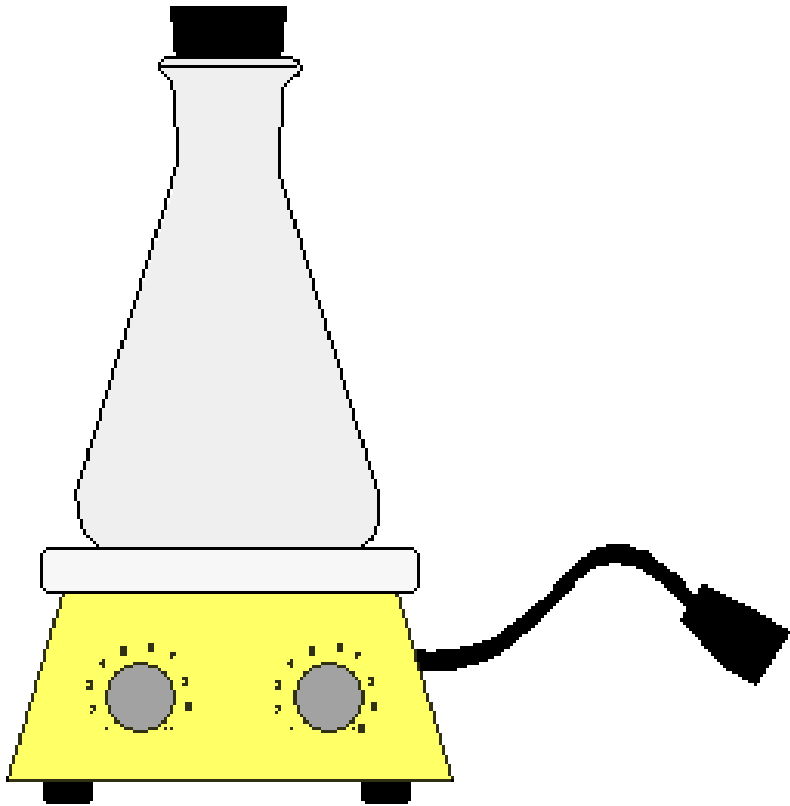




Keep **flammable** substances  
away from heat!



# Never Heat a Closed Container



The increasing pressure in the container can cause the contents to spray out the top, or the container shatters, spreading shards of glass

---

THE END

